

Bowland Retreat's Guidebook

Pubs / Restaurants



The Aspinall Arms

29 locals recommend

Our closest and most popular pub, picturesque spot situated by the river, 2 min drive from lodge (can walk but country road no footpath!). Large beer garden. Traditional menu. 3 miles picturesque walk along the river (route map available). Booking ahead recommended.



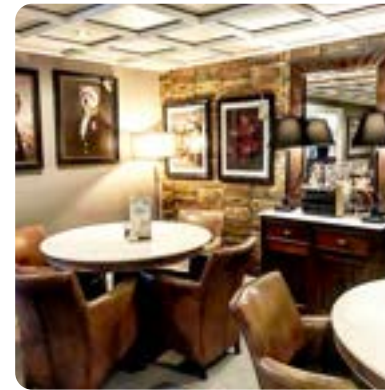
The Higher Buck

25 locals recommend

Culinary classics or innovative favourites, lovingly crafted from local produce of the highest quality. Popular choice quality dishes, fine ales and a warm welcome.

01200 423226

www.higherbuck.com



The Emporium

33 locals recommend

A unique setting of interior design coupled with delicious food and tempting drinks. Breakfast lunch or dinner. Pop in for a coffee and freshly baked pastries, meet friends for lunch or glass of fizz. Visit the Emporium decor shop below for a treat for your home. Located at the start of Clitheore high street, just above Sainsburys.

01200 444174

www.theemporiumclitheore.co.uk/interiors



Toms Table

22 locals recommend

Easy going destination serving French-inspired cuisine using locally sourced seasonal produce. Over two floors and an outside area and is open Tuesday to Saturday for Lunch, Afternoon Tea and Dinner, including an Early Bird menu available from 5pm-6pm. Fully licensed with 22 wines on the list and 10 available by the glass. Delicious desserts!

01200 422392

<https://tomstable.co.uk/>



The Three Fishes

11 locals recommend

A nice destination for a special treat. High quality fine dining with set seasonal menu. Run by famous chef Nigel Howarth, growing own produce on site. Outdoor terrace to enjoy drinks in the summer. Located in Great Mitton so just minutes away. Set menus and accompanying wine menus.



The Inn At Whitewell

75 locals recommend

Famously visited by the Queen. Beautifully located by the River in the Forest of Bowland. Withholds a good reputation for superb food, local ales and fantastic views. Nice outdoor terrace a the back.



The Rum Fox

14 locals recommend

Superb restaurant, with beautiful decor. Brilliant contemporary menu, definitely worth a visit. Indoor and outdoor spaces. Michelin Guide 2025 'One to Watch' Finalist - Top 50 Gastropubs 2025. Located in Grindleton approx 15 min drive away.



Northcote Hotel & Restaurant

24 locals recommend

Michelin star restaurant, place to indulge in outstanding food from famous chefs and award-winning wines. The Manor is set in charming surroundings on the edge of the forest of Bowland AONB. Approx 15 min drive away.



The Eagle At Barrow

7 locals recommend

Choice of areas to dine & drink. Outdoor terrace, cosy wood burning log fires, comfy bar area and classic dining area. Menus offer the perfect combination of traditional classics, chef's daily specials and an eclectic mix of modern British dishes.



Tapas 47

6 locals recommend

Small stylish new Tapas restaurant in Whalley Village.



JUN YUE

Chinese Restaurant in Clitheroe. Fresh Chinese cuisine with friendly staff.



Amico Mio Whalley LTD

6 locals recommend

family run Italian restaurant in Whalley. Cosy environment, top quality food. Open for dine in and takeaway orders.



Will's Clitheroe

7 locals recommend

Cool and spacious bar in the centre of Clitheroe with selective menu. Cocktails and nibbles available too!



Eight at Gazegill

Wow, what a beautiful restaurant and even more stunning surroundings. Purpose-built restaurant set on the land of the farm at Gazegill Organics, located in the stunning Ribble Valley countryside, overlooked by the impressive Pendle Hill. Reservation required



Dough Pizzeria

A local spot for all ages, featuring Roman-style pizzas, specialty coffee, and a small Italian cocktail and wine menu. Intimate restaurant with a great stylish vibe.



Edisford Bridge

2 minute drive from your lodge! cosy country pub with good quality food. Popular choice in the summer with large beer garden too.

Cafes/ brunch



Deux Amis

9 locals recommend

Gorgeous interior, quaint little place for bite to eat and great coffees/ cocktails. Sometimes have live music sessions. Located in Whalley Village, 10 min drive away.

01254 271122

www.deuxamiswhalley.com



Cafe Brioche

Lovely little cafe for breakfast, lunch, coffee and cakes. Takeaway also available. Fresh sandwiches and baked sweet treats. Located on Clitheroe high street, so perfect pit-stop whilst your browsing the boutique shops.
01200 442121
<https://briocheclitheroe.co.uk>



The Chocolate Works

Chocolate cafe full of delicious fresh chocolates, hot chocolates, fondues, waffles, milkshakes, ice creams, proper mochas, barista coffees, fine teas, cakes, sandwiches and paninis.



Jungle

8 locals recommend
Hip cafe on Clitheroe high street, fresh produce, innovative menu and fab coffee.
Ring to book ahead to avoid dissapointment.
01200 374040



Little Town Dairy

Little Farm shop, butchery, dairy and Tea room, located 20 min drive from lodges in village of Longridge. Family run. Full English breakfast, lunch and light bites as well as cakes traybakes and scones!



Maxwells Cafe Wine Bar

6 locals recommend
Relaxed, friendly atmosphere. Heated outdoor seating area and an open-air roof terrace for summer. Big menu, child-friendly, breakfast, lunch or dinner, coffee, cocktails & wine. Located opposite Clitheroe Train station.
01200 443906
www.maxwellscafebar.co.uk



Bowland Food Hall at Holmes Mill

16 locals recommend
Lovely setting for breakfast or coffee and cake. If you're wanting to pick up great fresh local produce its quirky market style set up is fab with butchers and deli counter too!



5 Moor Ln, Clitheroe BB7 3JG, UK

'Moor' Coffee Shop & Cafe serving breakfasts, lunch, cakes and more! On Clitheroe high street.



Gio's Deli

Brings you authentic Italian flavours, made with love and tradition. From Breakfast sandwich , breakfast wraps and breakfast pizza! Super service and coffees.

Local Supermarkets



Tesco Superstore

7 locals recommend
10 minute drive. Duck Stree, Clitheroe.



Sainsbury's

6 locals recommend
8 minute drive, Moor Lane, Clitheroe (bottom of the high street) 1.5 hrs free parking.



ALDI

10 min drive, Whalley Road Clitheroe



Lidl

10 minute drive, Shawbridge lane, Clitheroe



Booths

Sightseeing



Clitheroe Castle

44 locals recommend

The castle is set in beautiful park grounds with playground. You can walk to the top of the castle and see amazing views, also explore the museum. Cafe seasonal opening (check times).



Stonyhurst College

19 locals recommend

Tolkein Trail is a very popular famous walk. A 5.5 mile circular walk. Map route available in lodge. Explore the beautiful scenery which inspired the tales of J.R.R. Tolkien! Stonyhurst has a magnificent museum including remarkable artefacts ordered by Henry VII.



Whalley Abbey East Gatehouse

10 locals recommend

This 14th century gatehouse, second richest of Lancashire's monasteries, was founded in 1296. www.english-heritage.org.uk/visit/places/whalley-abbey-gatehouse/history/



Lytham St Annes

50 locals recommend

Great day trip to build sandcastles on the sandy beach or visit the pier arcade. Fish and chips or Ice cream. Its 2 miles from Blackpool and roughly a 50 minute drive. The centre of Lytham itself has a fantastic range of shops, cafes, restaurants.



Windermere

272 locals recommend

You can get to Bowness-on-Windermere in roughly 1 hour and half if you fancy a day trip. Tourist hot spot so can get very busy. Shops, boat rides, watersports, eateries and plenty of activities.



Pendle Hill

118 locals recommend

Walk up to the summit and marvel at the outstanding views. Pendle Hill is 557 metres high. There's lots of walking routes.



Brockholes Visitors Centre

8 locals recommend



Singing Ringing Tree

28 locals recommend

The Singing Ringing Tree is a wind powered sound sculpture resembling a tree set in the landscape of the Pennine hill range overlooking Burnley. This Panopticon takes the form of a tree bending to the winds and harnesses the energy of those winds to produce a low, tuneful song.

Things to do



Everyman Clitheroe

32 locals recommend

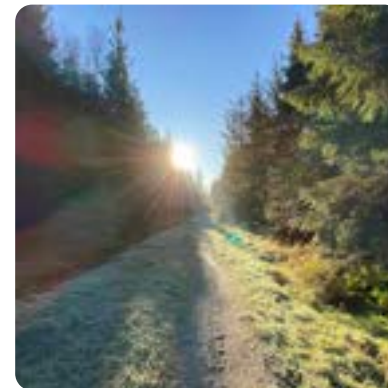
Luxe cinema suite with lavish sofas, drinks and dining whilst viewing.
www.everymancinema.com/clitheroe
01233 555642



Bowland Wild Boar Park

30 locals recommend

A local farm park approx 20 min drive, a great day out for families. Lots of animals and activities. Outdoor playground and café. Tractor trailer ride and animal petting available at certain times.
01995 61075
www.wildboarpark.co.uk



Gisburn Forest and Stocks - Forestry England

20 locals recommend

Explore the trails and experience a sense of space and freedom . Gisburn's dramatic scenery, with deep forest and challenging hills, provides the perfect backdrop for award-winning mountain bike trails. Demanding climbs and exhilarating downhill. Bike hire available. For those seeking a unique outdoor adventure, visit after dusk to soak in the wonder of the stars at this accredited Dark Sky Discovery Site.
Gisburn Forest hub & Cafe 01200 446387



Three Rivers Woodland Park

Three Rivers swimming pool, approx 15 min drive away. Perfect for a fun family activity. Ring to book ahead at peak times (01200 423523).



Holden Clough Nurseries

16 locals recommend

Gardeners heaven! Beautiful agrdens glass house, shop and Shepherds hut cafe. Perfect trip out. Events and workshops available. 20-25 min drive away.

<https://holdencloughnursery.com>

01200 447615

01200 447447



Stydd Restaurant in The Glasshouse

16 locals recommend

A selection of interesting and unique shops and eateries housed in quirky buildings and cabins set in stunning gardens in Ribchester (15 min drive away). Delightful cafe/bar and restaurant housed in our green-house providing a warm and friendly welcome, an innovative wine company offering to quench and titillate your thirst and a cosy tea-room/coffee shop specializing in scrumptious home-made cakes.

01254 820120 <https://www.stydd.com/>



Inch Perfect Trials - UK's Ultimate Trials Destination!

10 locals recommend

Unleash your inner petrolhead for an unforgettable experience! Experiences ranging from two-hour taster sessions to full-day adventures. No experience is necessary.



Pendle Village Mill

Department shopping outlet for an enjoyable day out. Home, garden, fashion and gifts. Chocolate Strawberry Tearoom, spacious, relaxing restaurant split onto two levels with outside covered seating overlooking the colourful Courtyard Garden Centre.

pendlevillage.co.uk

General 01282 442424

Tearoom 01282 442433



The Grand Venue, Clitheroe

17 locals recommend

Theatre and Events venue - Amazing live music, theatre performances, comedy shows and community events and kids clubs. Located in the centre of Clitheroe.

www.thegrandvenue.co.uk

Box Office: 01200 421599



Mrs Dowsons Farm Park

12 locals recommend

Fantastic family day out. Real working farm, lots of animals to see and learn about, playground, ice cream parlour, Tipi food & drink. Seasonal events; Jurassic interactive show, pumpkin picking, Scare kingdom... Check opening times.



Go Ape

11 locals recommend

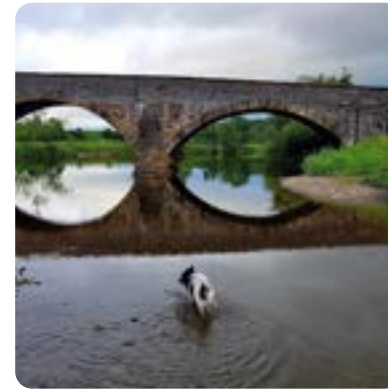
Great day out for adventurers with treetop Challenge, great mix of action and beautiful country views. 13-metre-high platforms, Tarzan Swing, and zip wire over water! Walking routes, food & drink plus picnic area. Rivington -Approx 50 min drive away. Also a smaller scale site for younger adventurers at Blackburn - Witton Park, approx 30 mins



Ribble Valley E-Bikes | Electric Bike Sales

7 locals recommend

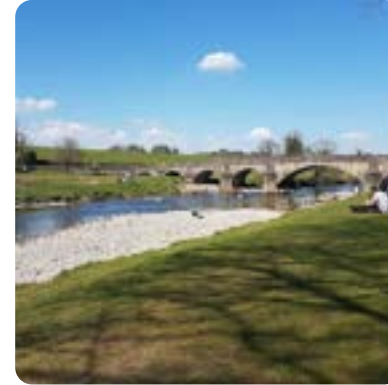
Based in lovely Dunsop Bridge area in the Forest of Bowland AONB. Providing electric bikes for hire for all abilities and ages. They offer a range of guided and self-guided tours of the area. Half day or Full day prices.
www.ribblevalley-ebikehire.co.uk
01200 426246



Brungerley Park Clitheroe

9 locals recommend

Ribble Valley Sculpture Trail - travels through Brungerley Park and Cross Hill Quarry, a local nature reserve managed by the Lancashire Wildlife trust, only a mile from Clitheroe town centre. A free cultural activity it encourages people to enjoy the park. Pass through a variety of woodland and flower rich grassland, dramatic views over the Forest of Bowland and River Ribble wildlife.



Edisford Bridge Picnic Area

A beautiful spot to paddle on a sunny day or enjoy a walk along the river. Childrens small steam train open at peak times. Small playground / swings. Carpark available.



Wood End Farm

Alpaca Experience - meet and greet some alpacas, explore the great outdoors with a trek or countryside walk. Learn about the animals and pet them. Hosted by the lovely Alison and her team, a lovely trip out!



Ribchester

12 locals recommend

15 min drive away. You can park up next to Potters Barn cafe, opposite is a great play park for children. You can walk around the village and take a stroll down the river to feed the ducks. The White Bull offers excellent pub classic menu for a spot of lunch and a pint. Or Ribchester Arms is another popular choice.



Holmes Mill

38 locals recommend

Bowland social - adjacent to the Beer Hall in Clitheroe. Duckpin bowling, shuffleboard, digital darts and crazy golf (coming soon to the complex!) Check socials. 3 hours free parking on site.



The Milking Parlour Clitheroe

Artisan Ice cream, milkshakes and waffle sticks. Just opposite the Main castle gates.



The Hideaway Cabaret

A show not to be missed! Acrobatics, singing, dancing, fire and ice!! Not forgetting dancing. Bring your own booze means you can enjoy your favourite tippie, sit back and enjoy the unforgettable show.

Drinks



Exchange Coffee Co

12 locals recommend

Rustic cocktail / coffee bar in the centre of Clitheroe high street. Serves brunch. 3 floors including roof top sun terrace. Cosy for a coffee and cake or be adventurous with a bottomless brunch! 01200 538523 www.escapecoffeeandcocktails.co.uk



The Beer Shack

Welcoming and friendly craft beer bar in Clitheroe, serving large range of craft beers and ciders from local independent breweries as well as carefully selected beers from around the world. Outdoor area out the back with blankets and heaters for chillier times or a nice little sun trap for Summer.



The Whalley Wine Bar

10 locals recommend

Serves a fantastic range of over 350 quality wines along with a small selection of craft beers. Cheese and charcuterie sharing boards and nibbles available too. Requires reservation in advance, gets booked up quickly as a popular spot. In Whalley village centre next to its award-winning fine wine merchant Whalley wine shop.

01254 824822

www.thewhalleywineshop.com/by-the-glass/



Shawbridge Street

Stylish coffee Wine bar. Wine, cocktails, beers and coffees plus Italian bar snacks. Attentive service.



The Parlour Cocktailbar

This small quirky bar is open Friday and Saturday evening only. Located on Wellgate Clitheroe, can book online. Sister bar to Shawbridge.



Fifty9 King Street

Now known as 'Fifty9' in the centre of Whalley, a cute spot with an array of beverages on offer. Often live music at weekends.



The Ale House Clitheroe

6 locals recommend

Independent micro-pub in the centre of Clitheroe. 5 cask ales on hand-pulls plus more, wines and ciders available. Quiz nights and live music occasionally. Check social for latest casks.

07547 359853



VAULT BAR & KITCHEN

Cool spot in Whalley. Check socials for updated menus

Food scene



115 guys

If you like burgers, this is the Takeaway for you! Order online, collect from Clitheroe. Katsu fries are a popular choice!

TAKEAWAYS

Check with us for list of local takeaways both delivery to your lodge or close by collect.



The friary whalley

Traditional fish and chips or authentic Chinese menu. Order online for delivery to your lodge or collection in Whalley. Available on Just Eat App. Salt and pepper chips is a personal favourite.



The Kings Wine & Cocktail Bar

Quality Thai restaurant and takeaway available. Wine bar and cocktails. Lovely outdoor seating in the Summer.

Childrens activities



The Little Lancashire Village Burnley

Brilliant mini village Role play centre for children. Closest location Brownhill aprox 20 mins drive away. Enjoy a brew and some cake or bite to eat while kids dress up and get stuck in!



Air Unlimited Burnley

If your kids are bursting with energy, AirUnlimited is a must-visit. The ultimate inflatable playground! 30 min drive from the lodges. Packed with giant bouncy castles, slides, obstacles and a football area. There's a small café area serving breakfast and lunch options as well as snacks to keep you fuelled. Midweek toddler mornings for discounted rates, aimed at under 5's.



Leaping Lizards Play Centre ONLINE BOOKING ONLY

Small Indoor children's soft play centre in Clitheroe, with football area, baby sensory area, interactive floor activity screen and fancy dress + role play toys. Great café selection.

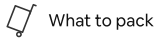
City advice



Getting around

Driving and public transport best way to get around

We are placed on a narrow country road with minimal footpaths so although there are no amenities in safe walking distance, local taxis can collect and drop off direct from your lodge (list of numbers available in your lodge), Uber now in Clitheroe! In a 10 min drive you can get to Clitheroe Train Station - direct trains to Manchester city centre. Bus station - direct buses to Skipton.



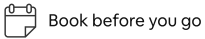
What to pack

What's included

Bath, hand and spa towels are provided. Bath robes provided for adults only. Complimentary tea/coffee/ sugar sachets for a welcome drink (but not enough for your stay!). Washing up liquid, cloth, sponge and tea towel provided. Limited toilet roll and kitchen roll provided. cooking oil, salt, pepper & foil.

Leaflets and magazines about local area included in your lodge ,walking and cycling routes, seasonal events and places of interest. Reading books & playing cards.

All TVs are smart with access to apps such as Netflix and Amazon Prime. *Please remember to log out of your accounts*



Book before you go

BOOK AHEAD

To avoid disappointment, we strongly advise making reservations especially for restaurants ahead of your stay as places do get booked up quickly!

Edit